

# Case Study: Team 6

21 October 2010

Tubatse Regeneration Strategy



# Development Vision

Platinum City of the World in 2025

Create Sustainable Integrated regional regeneration settlement that seeks to achieve community development in a sustainable manner along R37 mobility corridor towards Tubatse (Burgersfort)

Underlining principles in support of the vision:-

- Spatial Integration
- Promote & Grow Economic Opportunities regarded as Provincial Node (Burgersfort)
- Maximise Economic Opportunities along R37 (Bead Development)
- Improve Infrastructure through formalisation of Settlements

# Tubatse Regeneration Strategy



# Problem Statement

- Dispersed Residential Rural Villages in support of Mine Complexes
- Although predominantly Mining, Agriculture also Important
- Lack of Infrastructure (Social & Engineering)
- Proximity to Primary Node (Commercial Activities)
- Topography that restrict expansion & integration
- Settled along primary road network (R37)
- Surface & Mineral Rights linked to future mineral growth
- Communal Land Traditional Settlement

Tubatse Regeneration Strategy



# Socio-Economic Perspective

- Total Population – 360 000 (71 000 household – 5,5p/p)
- Growth 1,7% per annum
- Main Economic Drivers - Platinum & Chrome (followed by manufacturing although agriculture has significant value towards subsistence)
- Despite the mines unemployment still remains at 39%
- Labour Force Participation rate is 43% (higher than provincial average of 39%) = labour migration
- High incidences of informal employment sector (unskilled & Semi-Skilled)
- 53% live under the baseline (poverty) – R18,000 per annum

Tubatse Regeneration Strategy



# Spatial Form (Structuring Elements)

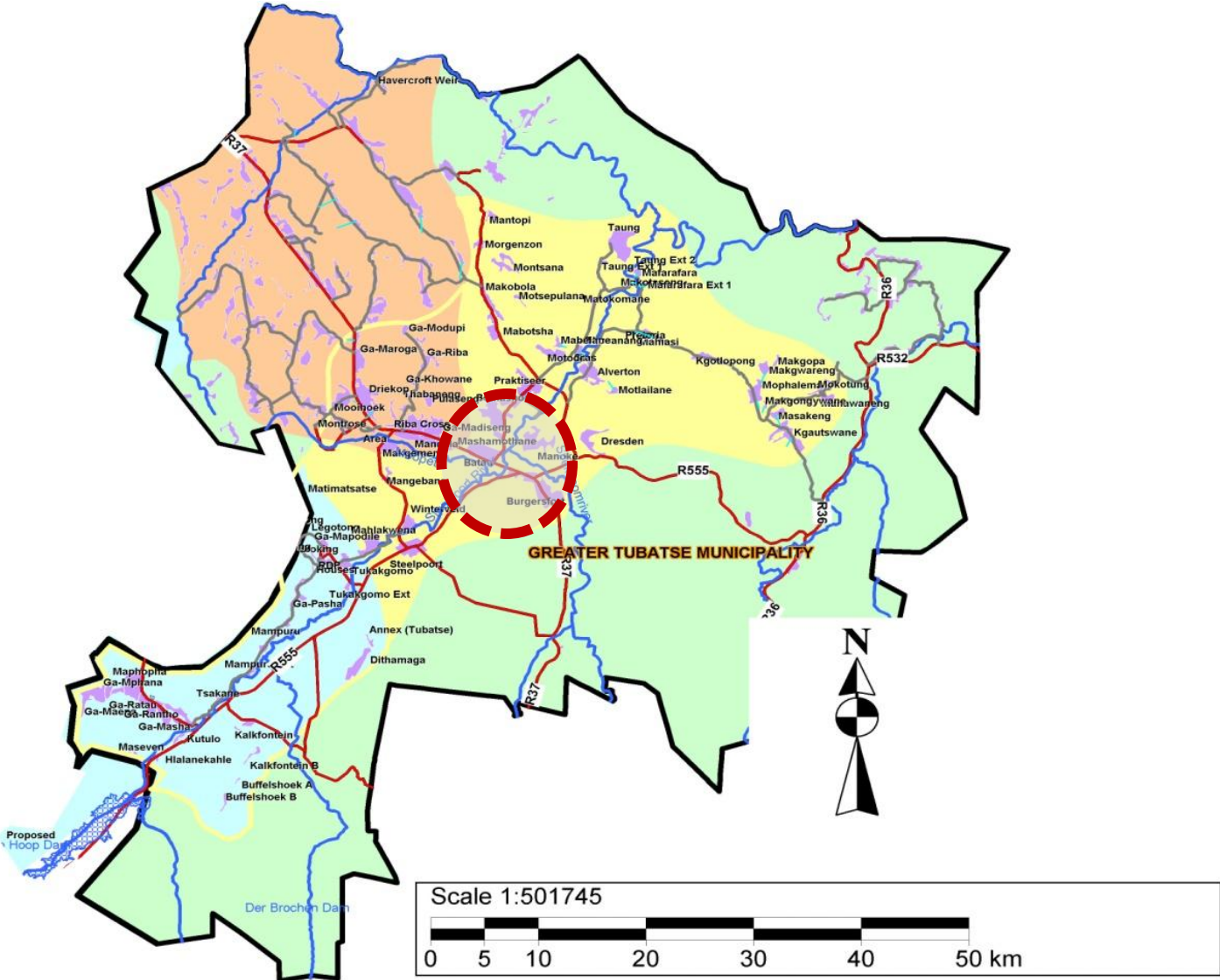
- Communal Land with Traditional Settlements
- Concentration along R37 and around Burgersfort Town
- Burgersfort acts as main Service Centre
- Steelpoort acts as District Growth Point
- Mecklenberg & Driekop acts as Municipal Growth Points (nodal development still at elementary level – no defined hierarchy)
- Private ownership dominate in south as Game Farms
- R37 (Polokwane) and R555 (Steelpoort) serve as primary Corridors for movement of Good & People
- More than 50% of land cover is under Land Restitution
- Settlements small & scattered

Tubatse Regeneration Strategy



# Regional Context

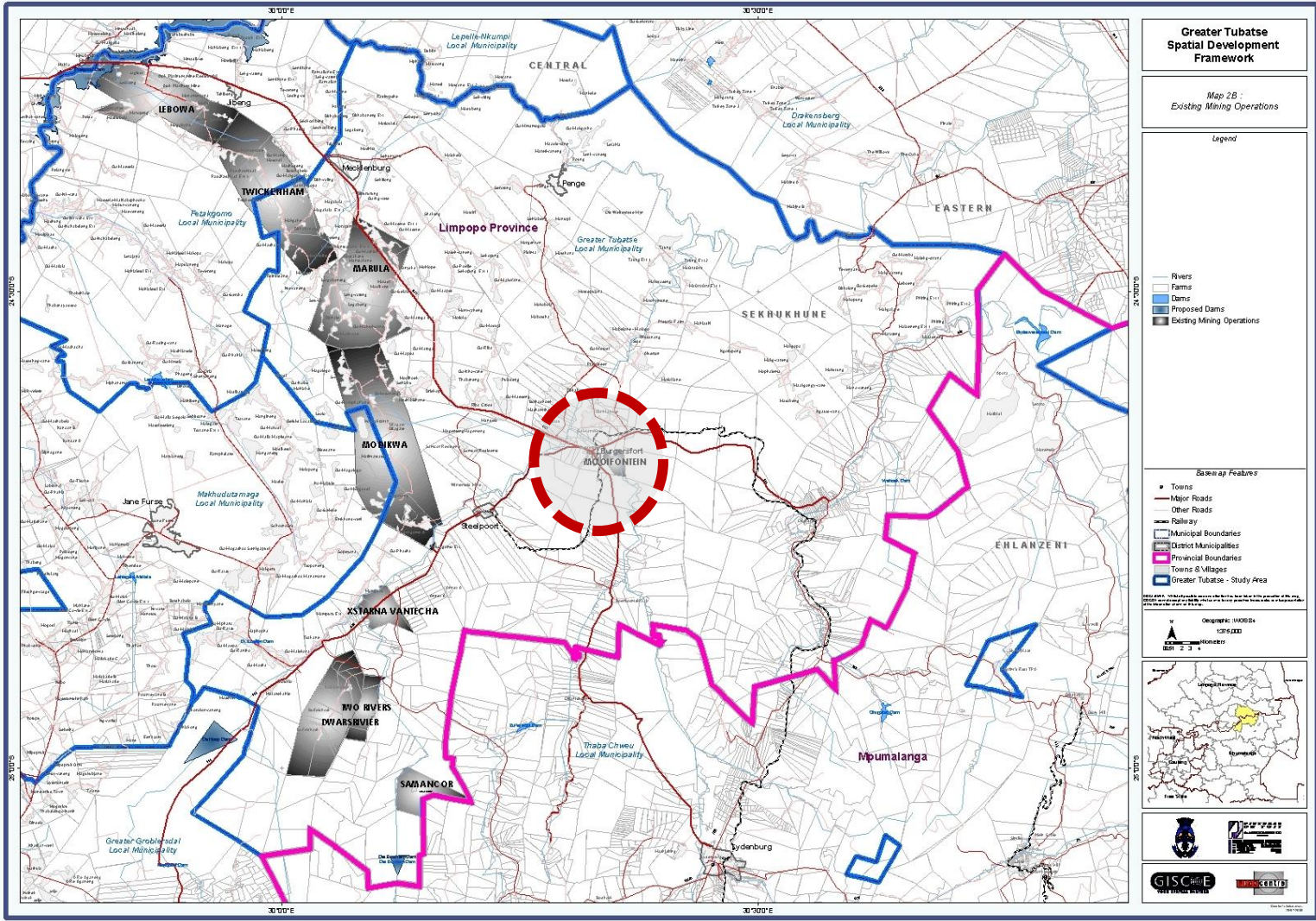
- Legend**
- GFM boundary
  - Sekhukhune District
  - Municipality
  - lebelo study area
  - nebo plateau study area
  - tubatse study area
  - Communities
  - boundary line
  - study area overlap
  - Turred Roads
  - Rivers
  - Proposed De Hoop Dam
  - main gravel roads
  - Dams
- Legend**
- town text 1:275000
  - municipality names
  - steelpoort river
  - municipal boundaries
  - mask 1
  - mask 2
  - rising mains



# Tubatse Regeneration Strategy



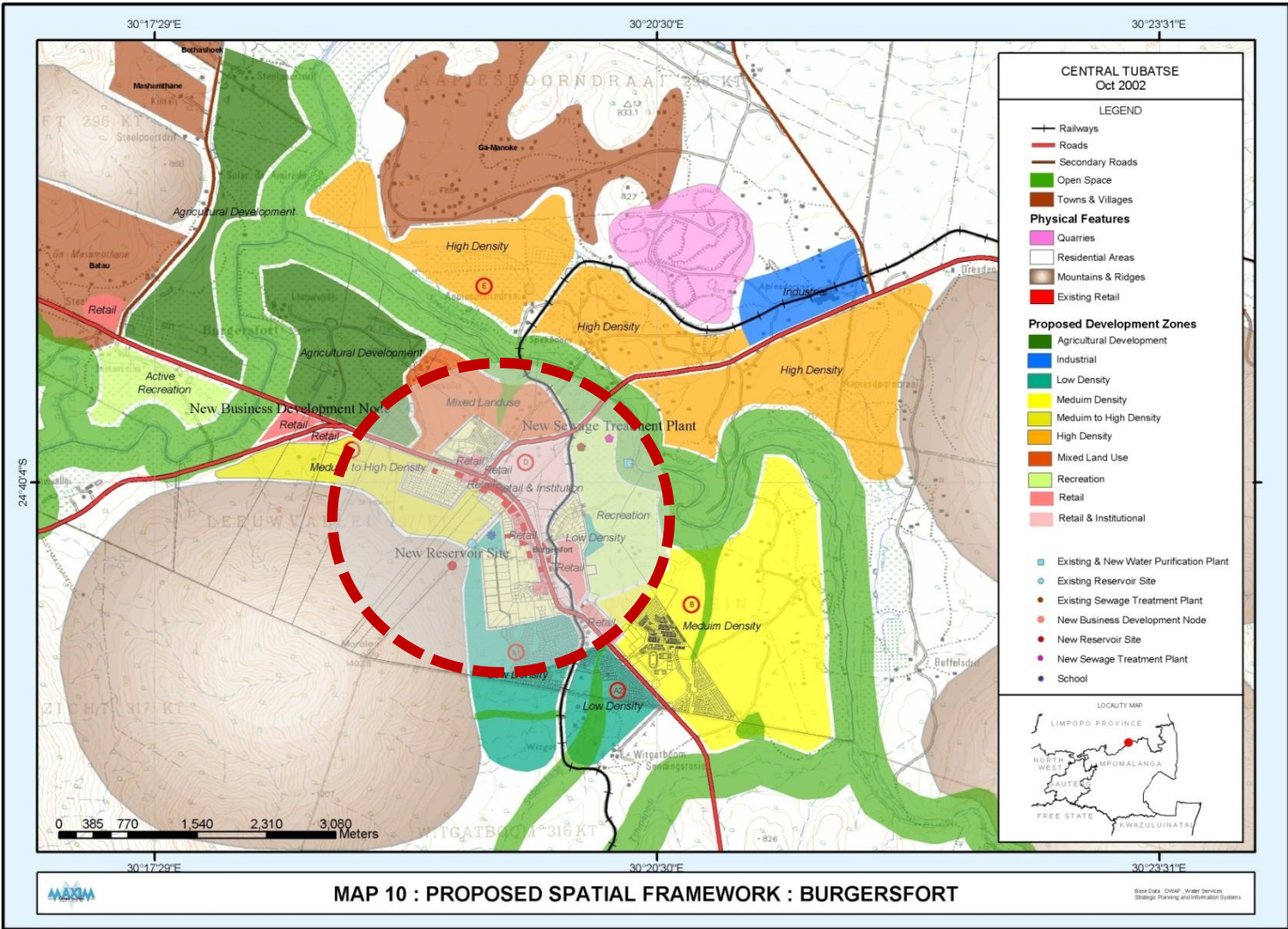
# Mine Belt (Platinum)



# Tubatse Regeneration Strategy



# Spatial Framework (Burgersfort & Surroundings)



# Tubatse Regeneration Strategy





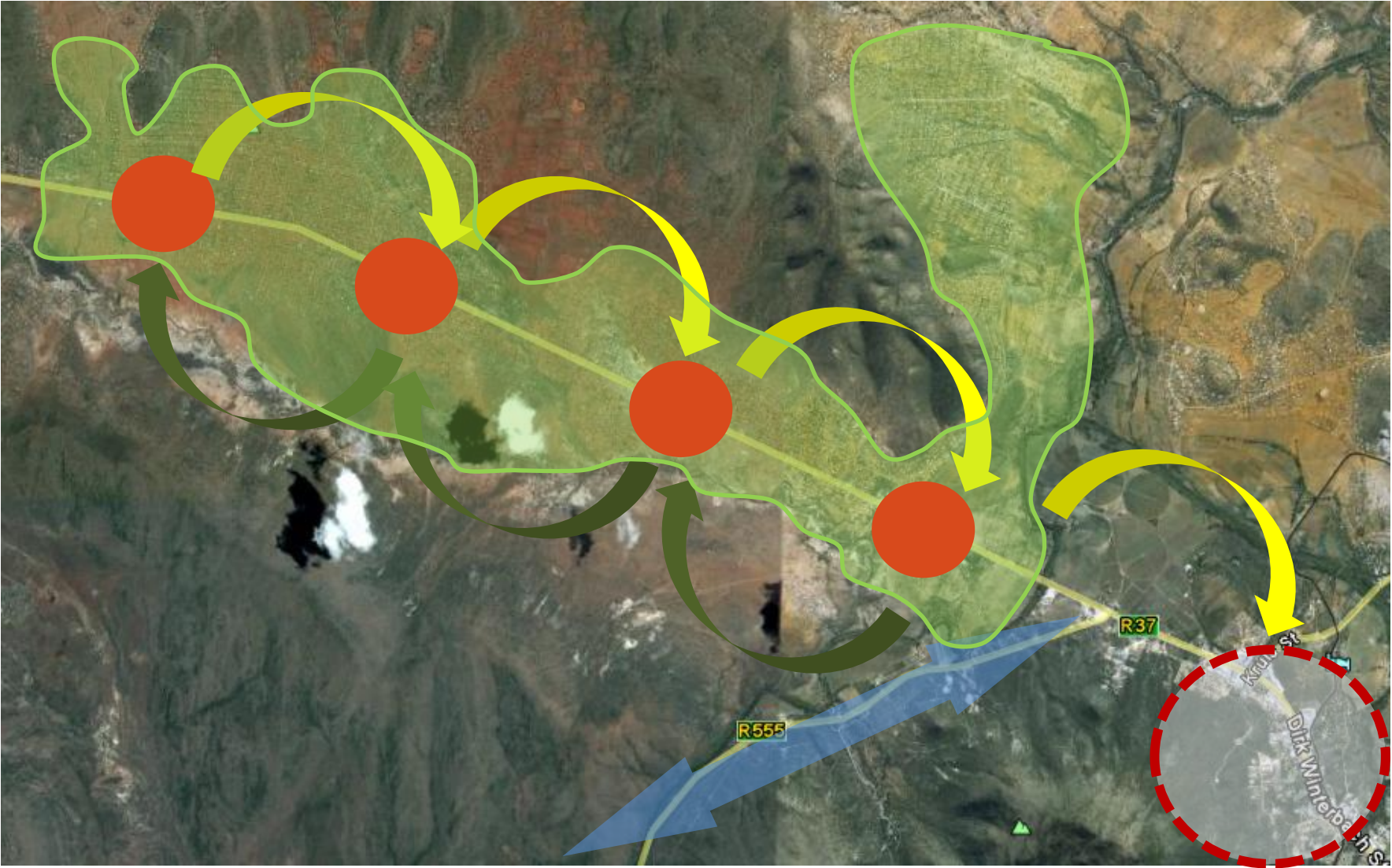
# Regeneration Strategy



# Tubatse Regeneration Strategy



# Regeneration Strategy (Economic)



Tubatse Regeneration Strategy



# Intervention (Key Areas linked to Strategies)

- Spatial Integration
- Access to Regional Opportunities
- Establish Local Economic Hubs (linked functionality)
- Moral Regenerations (restore dignity, civic duty, pride, etc)
- Skills Development & Education (self sustaining)
- Effective Planning System linked Land Use Management

Tubatse Regeneration Strategy



# Action Plan (Key Issues)

- Undertake Land Legal Audit
- Develop Strategy to strengthen designated Transport Corridors (reduce costs to access Service Centre)
- Increase accessibility to Support Infrastructure (accessible & reliable)
- Inter-dependency of economic markets that compliment Primary Node
- Promote & Grow Economic Markets (First economy & Secondary economy)
- Skills Training Facility to prepare for market appetite (take-up of capable work force)
- Stakeholder Engagement (Institutional Framework) – ongoing community involvement in structured fashion
- Develop Sustainable Human Settlements Strategy to improve quality of household life
- Protect & enhance Natural Resources (environmental compatibility & balance)

# Tubatse Regeneration Strategy



# Synopsis

- Risk Analysis
  - Land Release (restitution linked to tenure)
  - Infrastructure Support (Bulk & Link Services)
  - Life Span of Mine (Economic – demand & supply)
- Institutional Framework (Partnership linked to Funding Sources)
  - Corporate Social Investment Plan/Programme
  - Stakeholder Engagement
  - Municipality ability to Manage & Maintain

Tubatse Regeneration Strategy



Questions !!!!!!!



Tubatse Regeneration Strategy

